



MEDEN
SCHOOL

Uniform & Equipment

Parent and Carer Guide

2024/25



Uniform & Equipment at Meden School

This short guide contains pictures & illustrations to clarify what is and isn't acceptable student uniform and equipment, at Meden School.


A uniform is important in instilling in students, a sense of belonging, as well as a pride in themselves and their school. We maintain an extremely high standard of dress and ask that parents continue to support us in our efforts to ensure a continuance of these standards. We also ask that parents ensure that their children are always smart and tidy in appearance.





Would parents please note that extremes of fashion or unusual hairstyles are not permitted. Hair should be of a natural colour.

All equipment is initially given to students with the expectation that they will take care of it. All students must have a school bag.

If parents are unsure about any item of uniform or equipment, please contact the school before you agree to your child's request or refer to this guide for examples of images illustrating acceptable and unacceptable uniform.

Be Responsible Come Prepared



 School Bag	 Pencil Case	 Culture Card
 Tie	 Blazer	 Black Trousers
 Black School Shoes	 Lanyard and Card Holder	
 Planner	 Whiteboard	
ASPIRATION EXCELLENCE ACHIEVE		

Blazer, White Shirt, School Tie and Lanyard



Short or Long sleeved shirt



Lanyards are supplied by school

Trousers

✓ Acceptable Examples of Trousers



Slim Leg



Straight Leg



Boot Leg

Leggings and Jeans are **not** accepted at Meden School

V-neck Black Jumper

Accepted at Meden School

V-neck jumper only in black



**You can see the
school tie**



Not accepted at Meden School
Round neck sweatshirt/jumper



Shoes

✓ Acceptable Examples of Shoes



Black formal loafer



Black lace up derby shoe



Mary Jane shoe



Black leather loafer



Black leather brogue



Mendip craft shoe

✗ Unacceptable Examples of Footwear



Black bubble trainer



Black canvas lace up



Black leather trainer

Coats

Not accepted at Meden School



Accepted at Meden School



Earrings

✓ Acceptable Earrings



Small plain single stud in ear lobe

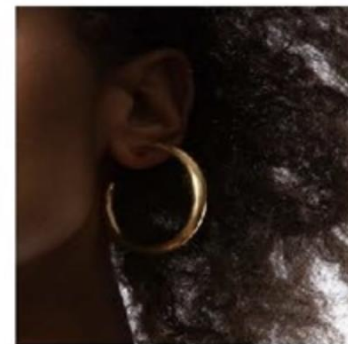
✗ Unacceptable Earrings



Large crystal studs



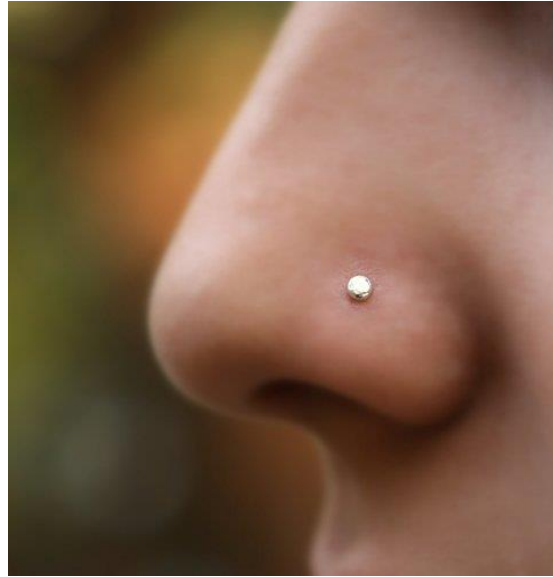
Multiple piercings



Hoops or dangly earrings

Nose and Tongue Piercings

Not accepted at Meden School



School Bag and Equipment

Every Student **MUST**
have a school bag



Each student will be given a pencil case, with all the equipment they need by the school:

- **Equipment list:**

- Whiteboard/RAG
- Planner
- Timetable
- Culture Card

Pencil Case



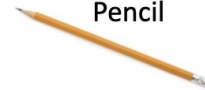
X2 Blue/Black Pens



Green Pen



Pencil



Ruler



Whiteboard Pen



Rubber



Students are expected to look after their equipment and we will not keep replacing it if students fail to do so.

We will however happily replace broken or worn out items.

If a student does not have all their equipment we will place a negative mark on their Culture Card.

Prohibited Items

These aren't allowed in school:

- Chewing/bubble gum
- Fizzy Drinks including Energy Drinks
- Smart Watches

These will be confiscated if seen.



Mobile Phones



Mobile phones & smart watches:

- Mobile phones and smart watches are not allowed to be used at Meden School.
- Switched off and out of sight.
- Only allowed on inside pocket of blazer or in trouser pocket
- SWITCHED OFF
- This applies anywhere on the the school site.
- When you leave the gates then you can have them out.
- Rules also apply to smart watches

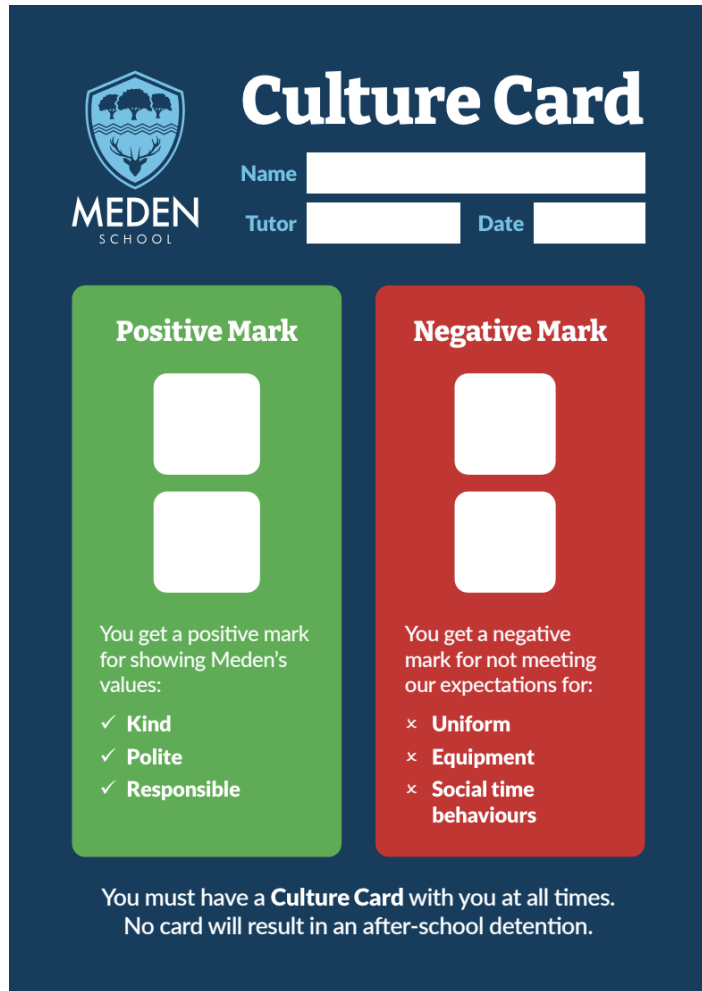
Reasons why a mobile phone or smart watch is confiscated:

- A student's phone or smart watch is seen or heard on the school site.
- A student is found to be carrying more than one mobile phone (in this case, all of the phones are confiscated).
- A student's phone is found to be turned on while on the school site. Phones **MUST** be switched off.
- A student has been involved in inappropriate social media activity.

Mobile phone & smart watch confiscation time period:

If a student's phone/smart watch is confiscated for one of the above reasons, it **will not** be returned until a parent or carer picks it up. A 20-minute same day detention will be issued.

Culture Card



The image shows a template for a 'Culture Card' from Meden School. The card has a dark blue background. At the top left is the Meden School logo, which features a shield with a stag and the text 'MEDEN SCHOOL'. To the right of the logo, the title 'Culture Card' is written in a large, white, sans-serif font. Below the title, there are three input fields: 'Name' followed by a long white box, 'Tutor' followed by a medium white box, and 'Date' followed by a medium white box. The card is divided into two main vertical sections. The left section is green and titled 'Positive Mark' in white. It contains two white square boxes for marks. Below these boxes, it says 'You get a positive mark for showing Meden's values:' followed by a list with checkmarks: 'Kind', 'Polite', and 'Responsible'. The right section is red and titled 'Negative Mark' in white. It also contains two white square boxes for marks. Below these boxes, it says 'You get a negative mark for not meeting our expectations for:' followed by a list with crosses: 'Uniform', 'Equipment', and 'Social time behaviours'. At the bottom of the card, there is a white text box that says 'You must have a **Culture Card** with you at all times. No card will result in an after-school detention.'

Culture Card

Name

Tutor Date

Positive Mark

You get a positive mark for showing Meden's values:

- ✓ Kind
- ✓ Polite
- ✓ Responsible

Negative Mark

You get a negative mark for not meeting our expectations for:

- × Uniform
- × Equipment
- × Social time behaviours

You must have a **Culture Card** with you at all times.
No card will result in an after-school detention.

Every student must have a culture card with them at all times.

The culture card is used to celebrate positive events such as being kind, polite & responsible and negatives events relating to uniform, equipment and social time behaviours.

Recording Positive and Negatives:

- If a student gets 2 positive marks the card resets and they are given a new card and 5 ATL points
- If a student gets 2 negative marks on their card they are given a same day 20mins after school detention. They are then issued with a new card.

Point to note. If a student does receive a negative mark on their card, this can be offset by receiving 2 positive marks on the same card as the card is replaced and it resets.

Great things are done by a series
of small things brought together

- Vincent Van Gogh

