

A Level Geography - Human

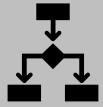


At Meden College

You are expected to complete independent work during any non-contact time or if there is any teacher absence.

Below are any tasks that should be completed as ongoing extended work and can be done if no work has been set by an absent teacher

Boost your employability



Develop your decision making skills



Challenge perceptions



Develop your investigative and analytical skills

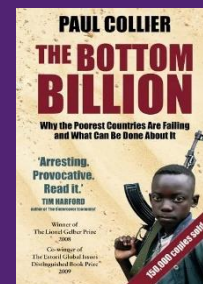
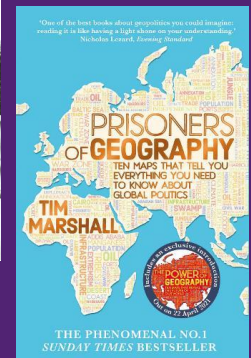
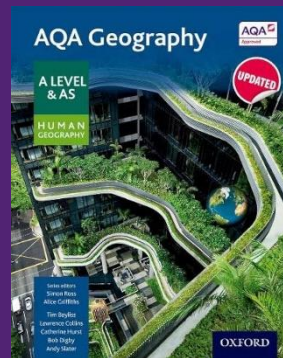


Undertake informed and critical questioning of data sources

Think like a Geographer!

- Practice analysing sources using PEALM** – Research topics we have studied and find some figures e.g. maps, graphs, photos and analyse what they show using PEALM (Pattern, Evidence, Anomalies, Links, Maths/Manipulate).
- Build on your distant and local place studies** – these are your biggest case studies for Changing Places, get to know them very well.
- Documentary review** – Research our case studies and find a documentary e.g. Lost World's with Ben Fogle: Detroit. Create a mind map or flash cards or write a review/summary.
- Concept Maps** – create a concept map for a key part of the specification from human geography, highlighting the main ideas of it and how it fits into the wider picture of your topics.
- Research a place** – what perceptions do you have before you research? After research, does your view change? Why/why not?
- NEA** – focus on your coursework (worth 20%), if you have not started this yet, start thinking about what you are interested in and what fieldwork investigations you could conduct and what data collection methods you could use

Wider reading



Revise by ...

- ✓ YouTube – Tutor2U revision blasts, Ellie the Curious Geographer
- ✓ RAG rate your knowledge to see areas you are confident in and areas to focus on.
- ✓ Practice exam questions from geographyportal.co.uk and self-mark.
- ✓ Test yourself using flash cards and revisit regularly.
- ✓ Prioritise the areas you are least confident on.
- ✓ Print off past papers and time yourself.
- ✓ Create Cornell Notes on each part of the specification.