

A Level Geography - Physical

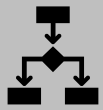


At Meden College

You are expected to complete independent work during any non-contact time or if there is any teacher absence.

Below are any tasks that should be completed as ongoing extended work and can be done if no work has been set by an absent teacher

Boost your employability



Develop your decision making skills



Think outside the box. Apply your knowledge to new scenarios



Develop your investigative and analytical skills

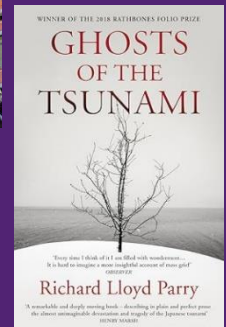
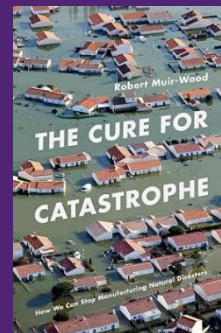
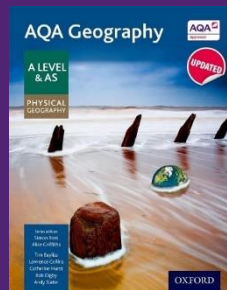


Compare and contrast evidence to reach a sustained judgement

Think like a Geographer!

- 1. Practice analysing sources using PEALM** – Research topics we have studied and find some figures e.g. maps, graphs, photos and analyse what they show using PEALM (Pattern, Evidence, Anomalies, Links, Maths/Manipulate).
- 2. Keep up to date with current geographical news** – look at news sites (e.g. BBC News, The Economist) for articles about climate change or recent natural hazards
- 3. Documentary review** – Research our case studies and find a documentary e.g. Volcano Live Iceland Eruption, Japanese tsunami. Create a mind map or flash cards or write a review/summary.
- 4. Concept Maps** – create a concept map for a key part of the specification from human geography, highlighting the main ideas of it and how it fits into the wider picture of your topics.
- 5. Improve your understanding** – there are lots of geography-related podcasts, e.g. Royal Geographical Society Podcasts, Science in Action by the BBC, the Economist Radio, Today in Focus by the Guardian

Wider reading



Revise by ...

- ✓ YouTube – Tutor2U revision blasts, Ellie the Curious Geographer
- ✓ RAG rate your knowledge to see areas you are confident in and areas to focus on.
- ✓ Practice exam questions from geographyportal.co.uk and self-mark.
- ✓ Test yourself using flash cards and revisit regularly.
- ✓ Prioritise the areas you are least confident on.
- ✓ Print off past papers and time yourself.
- ✓ Create Cornell Notes on each part of the specification.