



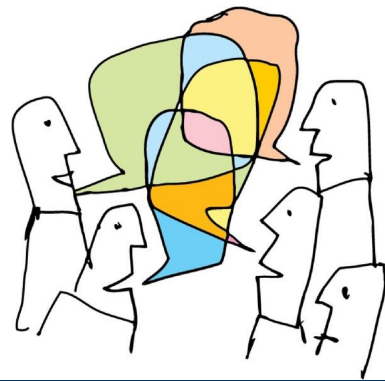
**MEDEN**  
SCHOOL

# How should we use Social Media safely?

Work hard, be kind

# SOCIAL MEDIA


- Social media or social messaging is everywhere.
- Talk to the person next to you why do people have social media/messaging accounts?
- What social media/messaging do you have?



# SHOW OF

- Facebook?
- Instagram?
- Tik Tok?
- Snapchat?
- What's App?

What is the minimum age for account holders on these social media sites and apps?



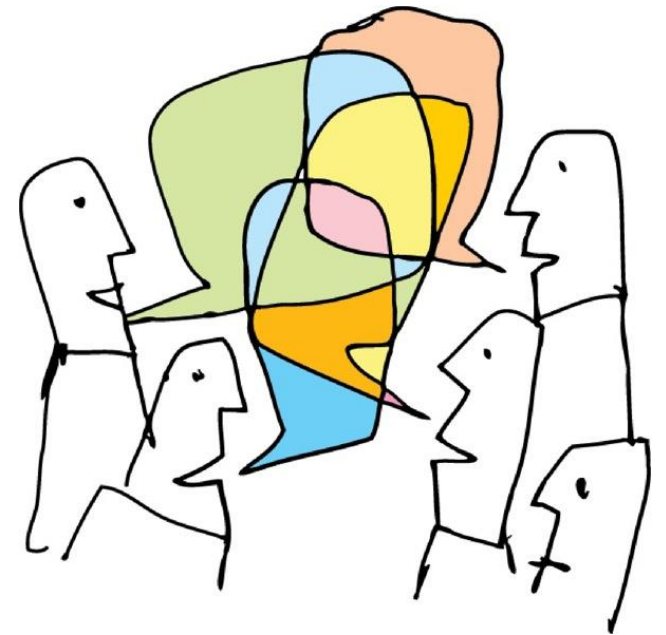
**Age Restrictions for Social Media Platforms**

Age	Social Media Sites and Apps
13	Twitter, Facebook, Instagram, Pinterest, Google+, Tumblr, Reddit, Snapchat, Secret
14	LinkedIn
16	WhatsApp
17	Vine, Tinder
18 / 13 with parent's permission	YouTube, WeChat, Keek, Kik, Foursquare, Flickr

*Age specified in the platform's terms of service as of 09/2014.*  
linneyville.com

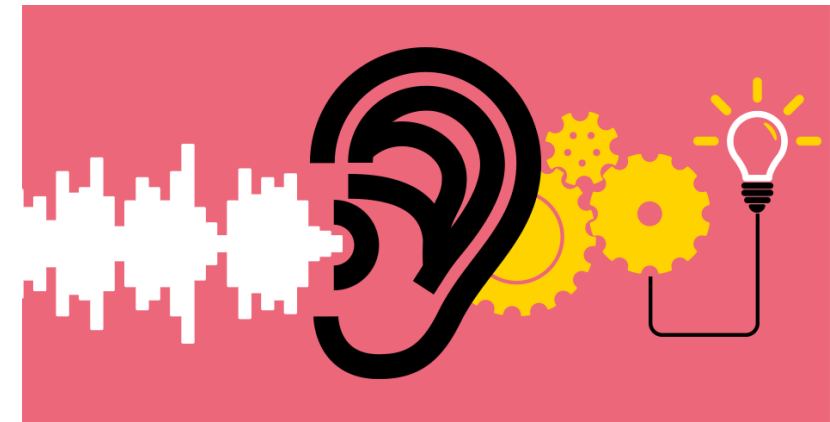
# WHY DO WE HAVE AGE RESTRICTIONS?

- Talk to your partner



# WHY DO WE HAVE AGE RESTRICTIONS?

- Age restrictions are there to keep you safe.
- The content you may be exposed to may not be suitable.
- The other people on the social media/messaging site will be older than you. This could expose you to people that will take advantage of you.
- You may not be mature enough.





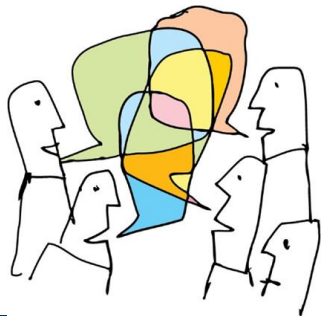
# HOW SHOULD YOU USE SOCIAL MEDIA?

- The next slides will help us to answer this question



# WHAT IS THE MESSAGE OF THIS VIDEO?

- <https://www.youtube.com/watch?v=z1n9Jly3CQ8>
- Never share images of your private areas.
- Never trust anyone with a picture/video of yourself.
- As soon as something is posted you no longer have control of it.
- If someone asks for a picture/video, you must say no. If they ask again you must say no again. Once they have a picture you are no longer in control.
- Would you want your parents/carers to see it?



# HOW DOES SOCIAL MEDIA INFLUENCE YOU?

- Talk to the person next to you.





# THINK BEFORE YOU POST

- How does it make you feel if someone says something derogatory to you?
- Social media and messaging never goes away.
- The messages you send hurt people as much as they would you, or if someone said them face-to-face.





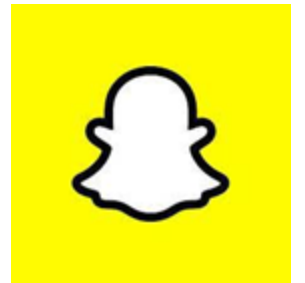
Before you

**THINK**

Is it **T** true?  
Is it **H**elpful?  
Is it **I**nspiring?  
Is it **N**ecessary?  
Is it **K**ind?

www.technologyrockseriously.com



# HOW CAN YOU USE SOCIAL MEDIA SAFELY?

- Never post images of your private parts.
- Never send an image/video of yourself to someone else.
- Remember social media is set up to show you the same content theme again and again. You are not in control of what you see.
- Do not post explicit images – if the image is of another child you are breaking the law. It is child pornography. The police will be contacted.
- Create a family account that your parents have access to.
- Only send messages that you would be happy to receive yourself.





**Being kind**

**Being polite**

**An outstanding ATL**

**In lessons**

**Out of lessons**

**In the local community**

**On the bus**

**Everywhere**

**It is an expectation that we treat everyone at Meden with respect.**

*“Character is what you do when no one is watching.”*

# DESIGNATED SAFEGUARDING LEADS



**Mr D Penman**  
Senior Designated Safeguarding  
Lead



**Miss K Hickinbotham**  
Deputy Safeguarding  
Lead



**Mrs E Callaway**  
Safeguarding Officer



**Miss L Whitehouse**  
Safeguarding Officer



**Mr G Harris**  
Pastoral  
Safeguarding Lead



**Mrs B Rogers**  
Pastoral  
Safeguarding Lead



**Mrs T Coulson**  
Administrative  
Safeguarding Lead

**Be Kind**  
**Be Polite**  
**Be Responsible**

ASPIRATION



EXCELLENCE



ACHIEVE

People will forget what you said,  
people will forget what you did,  
but people will never forget how  
**YOU** made them **FEEL.**

Maya Angelou

ASPIRATION



EXCELLENCE



ACHIEVE